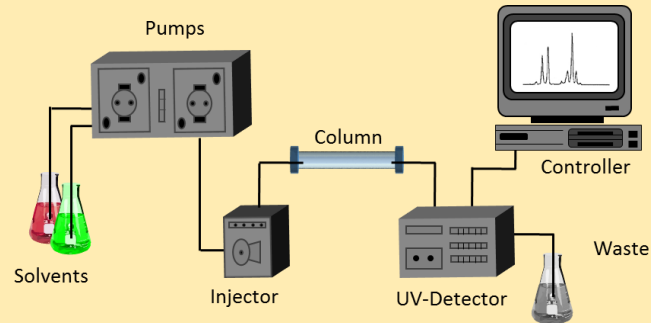


# Selection of aptamers against anabolic steroids

## Conventional methods

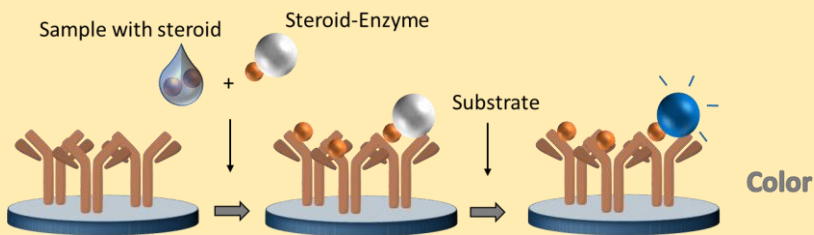
### Liquid Chromatography – Mass Spectrometry (LC-MS)



- Few laboratories
- Expensive
- Trained personnel
- Lower sample capacities



### Antibodies



- Commercial kit based on competition assay
- Few developed antibodies
- Polyclonal antibodies
- Cross-reactivity with other steroids



## What is the solution?

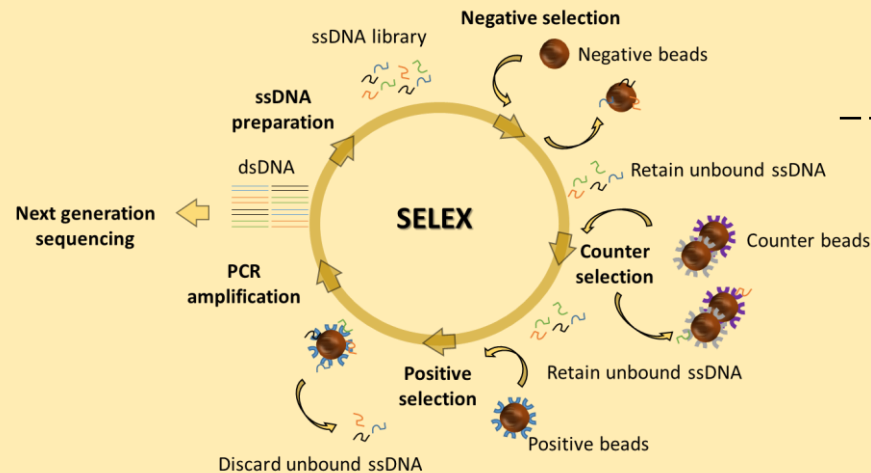
### Aptamers



- Artificial nucleic acids (RNA/DNA)
- Chemically synthesized
- No batch to batch variation
- Ease of modification
- High flexibility
- Reversible denaturation
- High specificity and affinity
- Recognition of small variations in the target



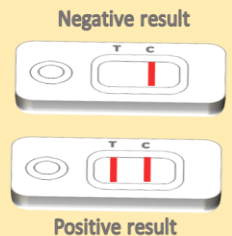
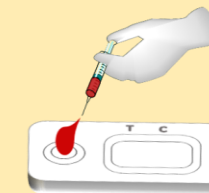
### Selection of aptamers (SELEX)



### Doping detection



### Lateral flow assay



ASSURED

- Affordable
- Sensitive
- Specific
- User-friendly
- Rapid & Robust
- Equipment free
- Delivered

